

2009 NDTAC National Conference
Improving Educational Outcomes for All Students who are
Neglected, Delinquent, or At-Risk of Academic Failure



Child Welfare (Maltreatment) & Juvenile Justice (Delinquent)
Youth:

Improving Outcomes through System Coordination & Integration

John A. Tuell
Child Welfare League of America



AN UPDATE ON THE “CYCLE OF VIOLENCE”

**The Connection Between Child Maltreatment & Juvenile
Delinquency**

General delinquency research shows that childhood abuse (physical and sexual) is often associated with delinquency and that the early onset of maltreatment may increase the variety, seriousness, and duration of problems. It is also widely suggested that violence begets violence - that today’s abused children become tomorrow’s violent offenders. Further, children who suffer from neglect – not only physical abuse - are also at risk.

National Institute of Justice, Research in Brief: An Update on the Cycle of Violence
(Widom, C.S. and Maxfield, M.G. February 2001)

AN UPDATE ON THE “CYCLE OF VIOLENCE”

The Connection Between Child Maltreatment & Juvenile Delinquency

The study followed 1,575 cases from childhood through young adulthood comparing the arrest records of two groups:

- **Study group of 908 substantiated cases of childhood abuse or neglect processed from the courts from 1967 through 1971 and tracked through official juvenile and criminal records.**
- **Comparison group of 667 children not officially recorded as abused or neglected, matched to the study group according to sex, age, race, and approximate family socioeconomic status.**

AN UPDATE ON THE “CYCLE OF VIOLENCE”

The Connection Between Child Maltreatment and Juvenile Delinquency

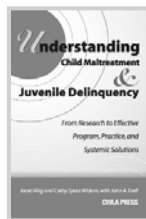
FINDINGS

- **Being abused or neglected as a child increased the likelihood of arrest as a juvenile by 59 percent, as an adult by 28 percent, and for a violent crime by 30 percent.**
- **Maltreated children were younger at the time of their first arrest, committed nearly twice as many offenses, and were arrested more frequently.**
- **Physically abused and neglected (versus sexually abused) children were the most likely to be arrested later for a violent crime.**

OTHER NEGATIVE OUTCOMES RESULTING FROM CHILDHOOD MALTREATMENT

- Mental health concerns (suicide attempts and post-traumatic stress disorder).
- Educational problems (extremely low IQ scores and reading ability).
- Occupational difficulties (lack of work, high rates of unemployment, and employment in low-level service jobs).
- Public health and safety issues (prostitution in males and females and alcohol problems in females).

RESEARCH CONCLUSIONS - IMPLICATIONS



Including the Widom & Maxfield study, there have been four regional prospective studies of this relationship. All provide evidence of a documented relationship between childhood victimization and some form of delinquent behavior.

It is equally critical that we understand that childhood abuse and neglect are associated with a demonstrated increased risk of crime and violence, but this relationship is neither inevitable nor deterministic.

JUVENILE JUSTICE & DELINQUENCY PREVENTION ACT
Enacted November 2, 2002

The JJDP Act provided:

- funding for comprehensive juvenile justice and delinquency prevention programs that meet the needs of youth through the collaboration of the many local systems before which a child/youth may appear;
- funding for programs that provide treatment to juvenile offenders who are the victims of child abuse or neglect, and to their families, in order to reduce the likelihood that such juvenile offenders will commit subsequent violations of law;
- requirement to establish policies and systems to incorporate relevant child protective services records into juvenile justice records for purposes of establishing and implementing treatment plans for juvenile offenders;

JUVENILE JUSTICE & DELINQUENCY PREVENTION ACT

On March 24, 2009, the JJDP Reauthorization Act of 2009 (S. 678) was reintroduced in the U.S. Senate for the 111th Congress by Senators Patrick Leahy (D-VT), Arlen Specter (D-PA), Richard Durbin (D-IL), and Herb Kohl (D-WI):

Section 223(a)(27): ...so as to provide for:

(A) a compilation of data reflecting information on juveniles entering the juvenile justice system with a prior reported history as victims of child abuse or neglect through arrest, court intake, probation and parole, juvenile detention, and corrections; and

(B) a plan to use such data to provide necessary services for the treatment of victims of child abuse and neglect who have entered the juvenile justice system;

Section 223(a)(28): establish protocols, policies, procedures & systems to incorporate relevant child protective services records into juvenile justice records for purposes of establishing & implementing treatment plans.

CHILD ABUSE PREVENTION & TREATMENT ACT AMENDMENTS
Enacted June 25, 2003

Additional Purpose Area for A/N Program Grants:

Section 106(a)(13): supporting and enhancing interagency collaboration between the child protection system and the juvenile justice system for improved delivery of services and treatment, including methods for continuity of treatment plan and services as children/youth transition between systems.

Additional Data Collection Requirements for States:

Section 106(d)(14): state data reports must include the number of children/youth under the care of the State child protection system who are transferred into the custody of the State juvenile justice system.

PRIMARY ISSUES for EXAMINATION & RESOLUTION

- **Data – collection & availability**
- **Information - management, exchange/sharing & utility**
- **Resources – inventory, duplication & blending**
- **Assessment – duplication, instruments, & sharing**
- **Legal Analysis – federal & state statutes, policies, procedures & qualitative analysis**



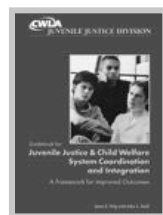
UTILIZING BEST PRACTICES & EVIDENCED BASED METHODOLOGIES

- Screening and Assessment
- Case Assignment
- Case Flow Management
- Case Planning and Supervision
- Interagency Collaboration

Source: NCJJ/OJJDP, When Systems Collide: Improving Court Practices and Programs in Dual Jurisdiction Cases, *Special Projects Bulletin*, June 2004



STRATEGIC PLANNING FRAMEWORK



**Guidebook for Juvenile Justice
& Child Welfare Systems
Coordination & Integration:
A Framework for Improved Outcomes**

FOUR PHASE PROCESS:

I. MOBILIZATION / ADVOCACY

II. STUDY & ANALYSIS

- Data Collection, Mgmt., &
Performance Measurement

- Resource Inventory &
Assessment

- Legal & Policy Analysis

III. ACTION STRATEGY

IV. IMPLEMENTATION

Formalize Governance

The governance and decision-making processes should be formalized. This may take the form of:

- executive orders
- charter agreements
- memoranda of understanding (MOUs) or
- memoranda of agreement (MOA's)

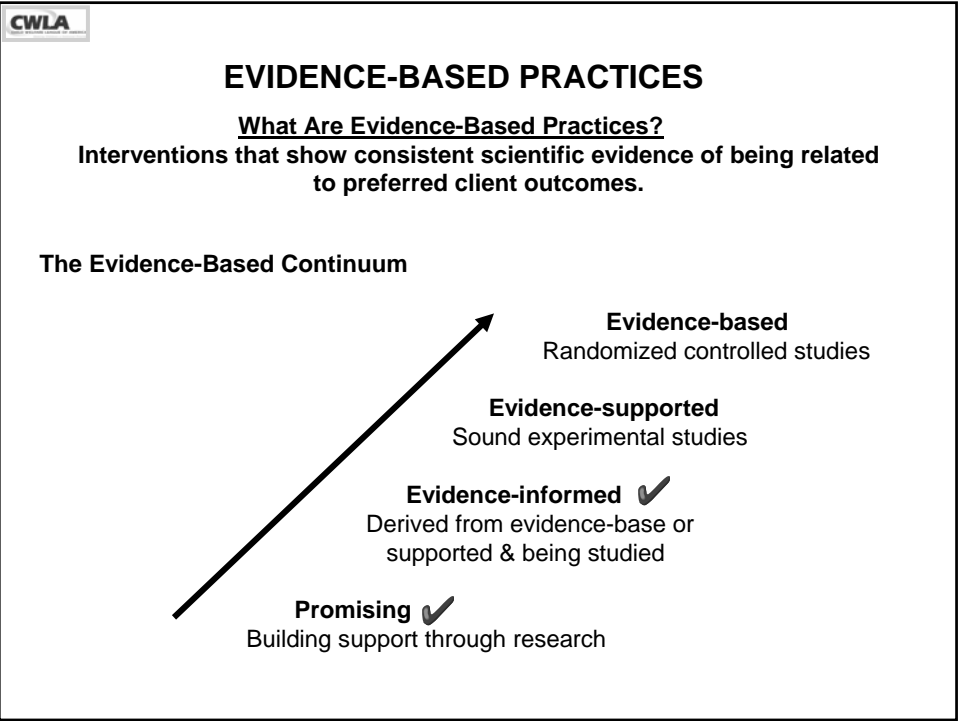
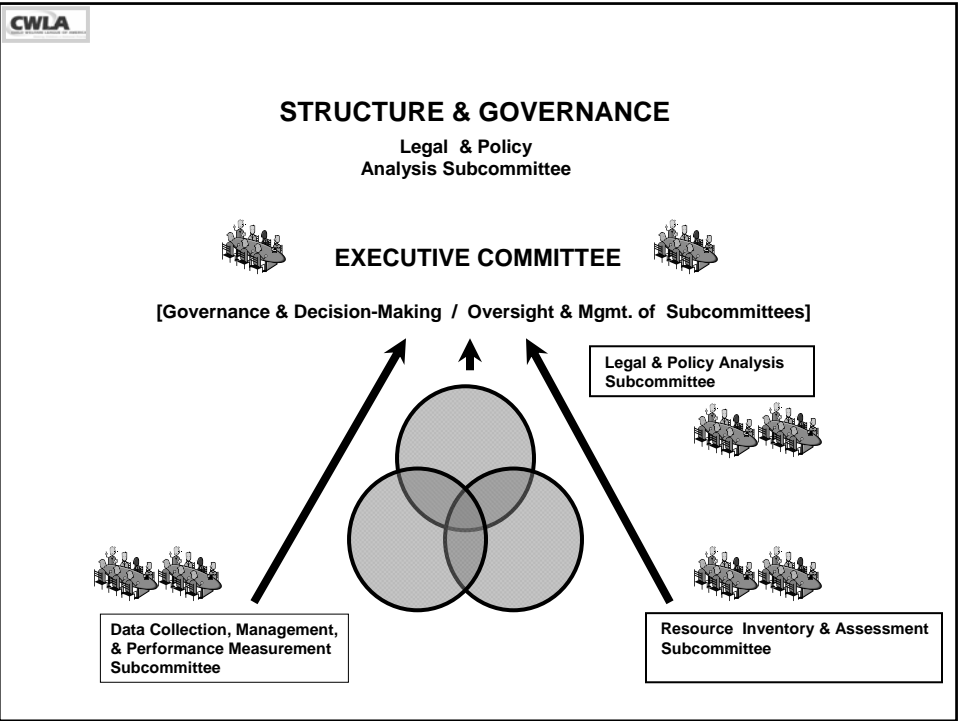
These documents may contain the following:

- descriptions of the problem,
- goals & outcomes for the initiative,
- descriptions of the management & organizational structure,
- information to be shared & activities to take place,
- nature of the recommendations to be developed, and
- legal responsibility & authority of the parties.

Management

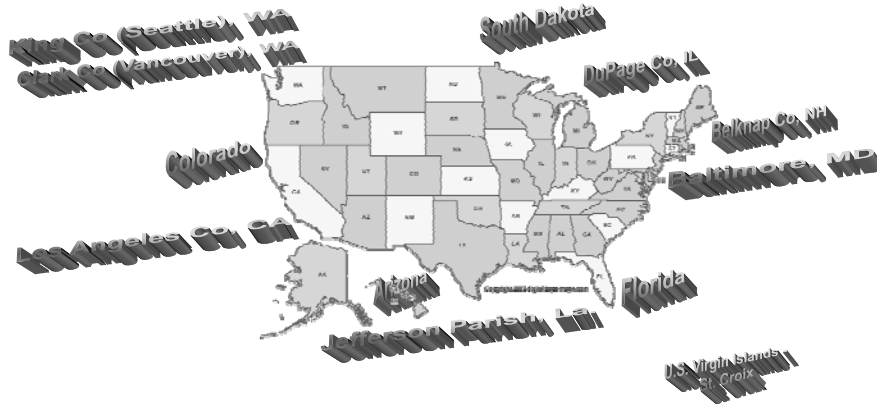
The initiative must have a clear management structure to support the reform/change process through all of its phases. The management structure should:

- establish the governance and decision-making processes
- determine staffing and funding
- designate working teams or committees
- establish timelines, and
- develop both public & internal communications strategies.

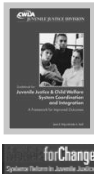




CONSULTATION INITIATIVES



Successes have been achieved and valuable lessons learned!



DELIVERABLE PRODUCTS / OUTCOMES

Multi-Agency Charter Agreement (King Co, WA; SD; FL; LA)

A multi-agency agreement that details the goals & objectives, governance & structure, specific tasks & timelines, & the commitment of the collaborative partners.

Protocol for Handling Dual Jurisdiction Cases (King County,

WA; Los Angeles County, CA) A working agreement is completed which details joint policy and procedures regarding how juvenile court probation and the state Children's Administration work together in support of dual status youth and their families.

Multi-Disciplinary Team Protocol & Assessment Process

(Los Angeles County, CA) A prescribed methodology and process for a multi-disciplinary team approach for assessment and recommendations on behalf of dependency youth referred to the court on delinquency matters.

DELIVERABLE PRODUCTS / OUTCOMES

PathNet (King County, WA)

Recognizing the severe negative impact of students dropping out of school on the juvenile justice system, an *Education Integration Committee* was organized within the King County System Integration Initiative and designed a *path of networked organizations*. *PathNet* is a systematic coordination of existing programs to which each youth receives a strength-based assessment, self-developed plan and an adult “care manager”.

Resource Guide for Information Sharing (King County, WA; Arizona)

This critical document provides a resource for legal, policy and practice matters for all Initiative partner agencies regarding the exchange of case-related information necessary for joint case assessment, planning and integrated service delivery.



DELIVERABLE PRODUCTS / OUTCOMES

Aftercare Joint Policy Statement Pennsylvania

Aftercare is the combination of services, planning, support & supervision that begins at disposition, continues while a youth is in placement, anticipates the youth’s release from placement, and extends thereafter through connections to other opportunities, supports or services, such as those provided to dependent children. The plan recognized that Aftercare is crucial if youths are to benefit from residential treatment programs and successfully return home; and that it is also a key element in promoting public safety.

A model Aftercare system must ensure that public schools work with placement facilities, juvenile courts and juvenile probation to guarantee every interested youth a prompt and smooth return to an appropriate classroom.





Georgetown University's Center for Juvenile Justice Reform (CJJR), in partnership with Casey Family Programs, created a program designed to strengthen the juvenile justice field and related systems of care. The partnership has been formed to offer the leaders of these systems a groundbreaking opportunity to enhance system performance & improve outcomes for children and youth known to both the juvenile justice & child welfare systems.

Small test of change...

Plan

Do

Study

Act / Adjust

<http://cjjr.georgetown.edu>

CWLA

ARE WE IN THIS ON OUR OWN?

VA - Comprehensive Services Act

CA - Welfare & Institutions Code (WIC) 241.1
AB129 Dual Jurisdiction Protocol

CO - Collaborative Management Policies

PA - Act 148 Needs Based Budgeting &
ICSP & the Aftercare Initiative

LA - Act 555 Children & Youth Planning
Boards

SD - HB1059 CW-JJ Information Sharing





**Child Welfare & Juvenile Justice Systems
Integration Initiative**

Contact Information

John A. Tuell
jtuell@cwla.org
703-753-0059
(Haymarket, VA)

John George
georgejohnr@msn.com
360-676-0365
(Bellingham, WA)

Janet Wiig
jwiig@cwla.org
480-837-1685
(Phoenix, AZ)

CWLA Headquarters:
2345 Crystal Drive, Suite 250
Arlington, VA 22202

www.cwla.org/programs/juvenilejustice

Consultation Initiatives:
www.cwla.org/programs/juvenilejustice/jjwork